



Wimka pal n pltman vapraCya pir`amkarktca Allyas

Jyotsna mohn kab; e

shalYak p@yapk, i3; k ix9` mhaiv`al y



Scholarly Research Journal's is licensed Based on a work at [www.srjis.com](http://www.srjis.com)

pStavna- ix9kl Vyvsayam@ye plx9`as Anlly sa2ar` mHTTv Aahe \_ plx9` he don  
pkarce Aste swaplvR plx9` v swatgrt plx9` \_ iv`a\$yaRya j D`6D`lm@ye swaplvR  
plx9`ace Ai2k mHTTv Aahe \_ iv`a\$yaRya svalg` ivkasacl j babdarl hl ix9kavr  
yete \_ jr Tyal a gu`v%aplvR ix9` idl e gd e tr to hl j babdarl yxSvlp`e par paDU  
xkl \_ swaplvR plx9`am@ye ix9kal a A@yapnace xaS5x@d )an im; al e \_ plx9`atth  
p@mQyane A@yapnacl nvl n t5e A@yapn p@d tl A@yapnacl pltmane [ \_cl maihtl  
im; ate

sedaitk paXvltvnl

VyKtImIvaci vthvadl samaij k ]pp%l- badra

Saamaij k vthvadl ivcarath sakarl dl VyKtImIvaci ]pp%l Aahe \_ vth  
6D-yatll c@k pltsad yatll AatriCya v Hya AatriCyatll cl e Aatirk  
bo2aImk cl e Aai` samaij k AatriCya 6Div`arl cl e yaCyaVdare ho`arl m@yS4  
plCya A@yynavdare VyKtIce VyKtImIv sakart Aste \_ Mh`th vthvCya ya 95atll  
]pp%ls VKtImIvaci samaij k A@yyn ]pp%l Mh3l e Aahe \_ badracl ]pp%l pul l  
g@htkavr Avl blh Aahe \_

wlmkapal n pltman

Role playing is a vehicle that forces people to take the rose of others'.  
Role playing is dealing with problems through action. A problem is delineated,  
acted out and discussed'.(Bruce joyce and marsha weil- models of teaching)

wlImkapal n xBdatll wlImka Mh`je kay te pulI pma`e sagta yel  
"ko`tlhl Vyikt [traxl sb2 p84aipt kr-yasa#l wavna, wa8a, ktl yaca  
Okmvaivdtly Aai` Agv;`l pDI d a Ok vix\*3yplR Aaktlb2 vaprte \_ yal ac Tya  
Vyiktcl wlImka Mh`ta yte \_

wlImkapal n plImanaCya pay~ya- g3al a p0Tsahn de e , shwagl iv`a\$yaCl invD  
kr`e , rgmc ]wa kr`e inrl9kana tyar kr`e sadrlkr` kr`e , sadrlkr`aca  
kal av2l , ccaR v mLLymapn kr`e , pin:sadrlkr` , ccaR v mLLymapn \_  
AnwvvaCl dva`6va` v samallylkr` \_

### sxi2n AllYasacI grj

- xa; tll ix9k he dhidn A@yapnam@ye A@yapn plImanaca vapr krt nahI \_
- wavl ka; atll ix9kanl TyaCya dhidn A@yapnam@ye A@yapn plImanaca vapr  
krava yasa#l iv`a4lR-ix9kana plImanal dare A@yapn krtana A@yyn-A@yapn  
plIcya kxl cal te yaca Anwv im; -yasa#l \_

### sxi2n AllYasace mhtIv

- wlImkapal n plImanaca vapr kLyamu e A@yyn plwavl ho}n, A@yapnaca dj ar  
s2ar-yas mdt ho{l \_
- A@yapn plIman vapr-yasa#l p0Tsahn im; d \_
- wavl ix9k xa; m@ye TyaCya dhidn A@yapnat A@yapn plImanaca vapr krtll \_
- A@yyn-A@yapn plIcya cagl l 6Dh ye-yasa#l vatavr` inimitlcl AavXykta  
Aste he iv`a4lR-ix9kaCya l 9at yel \_

xl8k -wlImkapal n plIman vaprCya pir`amkarktca AllYas \_

smSyaiv2an- bl OD\ \_ mhaiv`al yatll xal y VyvS4apn iv8yaCya invDk 63kace  
wlImkapal n plIman v parpairk p0dtIcya vaprCya pir`amaca AllYas \_

## skLpnaImk VyaQya

wlImkapal n - wlImkapal nam@ye VyKtl [traCya wlImka sakarte \_ Oqadya smSyce v`h kr`e iviv2 wlImka saka+n tl smSy saDr kr`e Aai` ntr Tya sadrIkr`avr ccaR kr`e \_

pir`amkarkta - A@yapn pirpak Mh`lh pUr iniXct ]idD\*3ap/t iv`a\$yakhI kD d l pgtI Mh`j e pir`amkarkta hoy \_

## kayaImk VyaQya

wlImkapal n plItman - जॉर्ज आणि फॅनी शॅपटेल यांनी विकसित केलेले प्रतिमानाच्या pDb2avr Aa2airt invDK 63kavr ivkist kD d a j itkayRm \_

pir`amkarkta- bl OD\p/x9`a4lha Ag/t s63k plItman v parpairk p@dT Aai` wlImkapal n plItman v parpairk p@dT yaCya shaYane A@yapn kLyan.tr ]%r caC`lCya gu`aCya m@ymanat idstH ye ara frk Mh`j e pir`amkarkta hoy \_

## sxo2nacl ]idD\*3e

1. wlImkapal n plItmanaCya shaYane A@yapn kr`e \_
2. parpairkCya p@dTlCya shaYane A@yapn kr`e \_
3. wlImkapal n plItman v parpairk p@dTlCya shaYane kD Lya A@yapnacl pir`amkarkta tpaS`e \_

## gItke

1. A@yapnacl plItmane vgaItI A@yyn-A@yapn plCysa#I AavXyk vatavr` inimItI krtat \_ UnagmotI, dsl e pan n. - 125Y
2. vgaIt@yapnam@ye plY9 j lvnam2II pSgacl ]war`l kr`e xKy Aste \_ wlImkapal nane A@yyn v A@yapn mnorj k hote \_ wlImkapal n svR vyog3aCya iv`a\$yaSa#I ]pykt #rte \_ Upa3II - 2007, sigta dxmicq - 2015Y

## सोडन पिरकलपना

विक्रमपाल न पितमानावदारे आयापन कल्यान.त्रि. इव'अश्याल्या स्पानत व पारपारिक पेटने  
आयापन कल्यान.त्रि. इव'अश्याल्या स्पानत पायोिगक गडाच्या ]%r cac`ltll गुाच्या  
मायमानत वा! हote उ]idd\*3 ५ 3Y

## खल्य पिरकलपना

विक्रमपाल न पितमानावदारे आयापन कल्यान.त्रि. इव'अश्याल्या स्पानत व पारपारिक पेटने  
आयापन कल्यान.त्रि. इव'अश्याल्या स्पानत पायोिगक गडाच्या ]%r cac`ltll गुाच्या  
मायमानत सा4R frk pDt nahl \_

## सोडनाचि वयाप्टि

पेटित सोडन हे सािव5lba{ file पुे इव'apl#atll svR ix9`xaS5  
महािव'ाल यातल्लि ब्लि \_OD\ce इव'4R \_

## सोडनाचि म्याक्ता

1. प/ix9`ai4R्या पेट`ा, 4kva, AavD, प/वाहuvv, v%l, कलि याचा प/त्सदवर हो`ाया  
पिर`ामाचा येते इव'car कडा जा`ार नahl \_
2. पेटित सोडनातल्लि इन\*क8R हे प/त्सदकानि इदल्ल्या प/त्सदवर अलि.बिह अस्तल्लि \_

## सोडन पिरम्याक्ता

1. सडर सोडन सािव5lba{ file पुे इव'apl#aCya ix9`xaS5 pdvl अल्ल्यास५माच्या सन  
2008 च्या अल्ल्यास५मा पिरते म्याक्दत आहे \_
2. पेटित सोडनासा#l स्पानत cac`l सोडनाका इनिमित्त आहे \_
3. ix9`xaS5 महािव'यातल्लि ब्लि \_OD\ vgaR्या मरा#l मायमातल्लि इव'अश्याR पिरते  
म्याक्दत आहे \_
4. सडर सोडन ix9`xaS5 महािव'ाल याच्या ब्लि \_OD\ \_ अल्ल्यास५मातल्लि खाल्य  
व्यवसायन- तिचे व पायी9क या इव'यातल्लि ग; तल्लि व S4gn, गदिल्ले वगैरे इव'स्तिल्लि  
समस्या या इव'दिल्ल्या 63कापिरते म्याक्दत आहे \_

j nsQya - saiv5lba{ ful e pi e iv`apl#atll svR bl ODce iv`a4IR \_

nmtha invDpedtl - shetk nmtha invD kd l v NyadxR Mh`th 140 iv`a\$yacl invD  
kd l \_

sxo2natll cle

- Sva&yl cl - wimkapal n pitmanaldare A@yapn v parpairk pedtline kd e  
A@yapn
- Aa&yl cl - iv`a\$yacl e pav-y spadn
- inyi5t cl - cac`l, iv`a4IR sQya, ma@ym, ploy k \_

sxo2n pedtl - pstt sxo2nam@ye p@yoigk pedtl invD kd l Aahe \_

sxo2n AiwkLp - kv; ]%r cac`l sman g3 AiwkLp

sxo2nacya kaypedtlca p/vahitKta

smSyacI invD

spadn cac`lcl inimitl

kv; sman g3 ]%rcac`l AiwkLp

p@yoigk g3

inyi5t g3

wimkapal n pitmanacya

parpairk pedtlcya

shalyane A@yapn

shalyane A@yapn

]%rcac`l

maihtlce ivXI B` v A4Invlcn

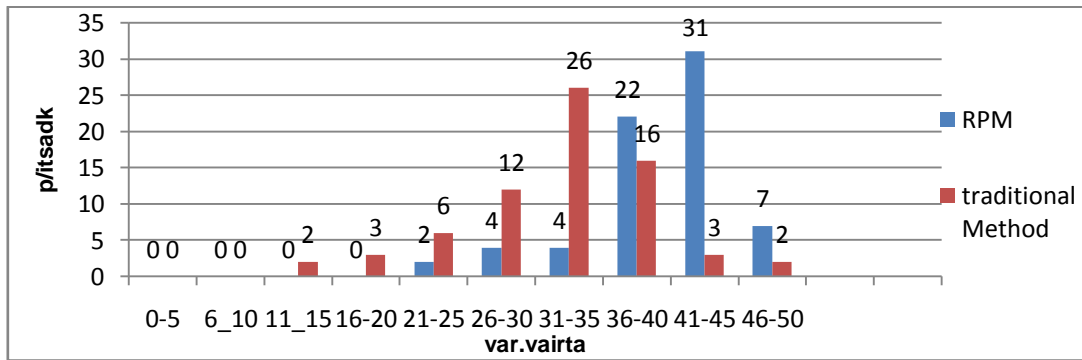
in\*k8R

maihtl skl nacl sa2ne : pstt sxo2nam@ye spadn cac`l ya maihtl skl n  
sa2naca vapr kd a Aahe hl spadn cac`l gu acI hotl \_

sQyaxa\$5ly sa2ne :sxo2nasa#l go; a kd tya maihtlce A4Invlcn v in\*k8R  
ka!-yasa#l xkDvarl, ma@yman ya sa2naca vapr kd a Aahe \_

sar`l 1. wlmkapal n plitmanaCya shaIyane A@yapn kIyan.tr iv`a\$yaIe spadn gu` v Paarpairk p@dtIe A@yapn kIyan.tr iv`a\$yaIe spadn gu` yam2II frk .

var.vairta	0-5	6-10	11-15	16-20	21-25	26-30	31-35	36-40	41-45	46-50	N	m@yman
wlmkapal n plitman	0	0	0	0	2	4	4	22	31	4	70	40.11
Paarpairk p@dtI	0	0	2	3	6	12	26	16	3	2	70	32.17



Aal q 1. p@yogk g3 v inyi5t g3 yaCya spadn gu` atII frk

inrl9` :- sar`l 1.v Aal q 1. yav+n

wlmka pal n plitmanaCya shaIyane kd Iya A@yapnatII iv`a\$yaIe spadn gu` ace m@yman 40.11 Aahe tr parpairk p@dtIeCya shaIyane kd Iya A@yapnatII iv`a\$yaIe spadn gu` ace m@yman 32.17 Aahe

**A4InvIcn** :- p@yogk g3al a wlmkapal n plitmanaCya shaIyane kd Iya A@yapnatII iv`a\$yaIe spadn gu` ace m@yman he inyi5t g3al a parpairk p@dtIeCya shaIyane kd Iya A@yapnatII iv`a\$yaIe spadn gu` aCya m@ymanap@a 7.94 gu` anl j aSt Aahe . Mh`j e wlmkapal n plitmanaI dare kd d e A@yapn plvavl Aahe .

**xIly pirkLpna**

wlmkapal n plitmanaI dare A@yapn kIyan.tr iv`a\$yaIe spadnat v parpairk p@dtIe A@yapn kIyan.tr iv`a\$yaIe spadnat p@yogk g3aCya ]%r cac` lI gu` aCya m@ymanat sa4R frk pDt nahI .

**sar`l 4.22. xly pirkLpna donce pir9`**

varvairta	iv`a4R (N)	sQya (M)	xly pirkLpna SvIkarā
inyi5t g3	70	32.17	Tyag
pāyoigk g3	70	40.11	

inrl9` - sar`l 2. v+n Ase idstl yte kl pāyoigk g3ace mēyman he inyi5t g3aCya mēymanapeṠa j aSt Aahe \_ yaca A4R xly pirkLpna Tyag v sxo2n pirkLpna SvIkarā kḁ a \_

**A4invicn :-** xaly VyvS4apn ya iv8yatll invDk 63kace bl OD\ iv`a\$yaCya inyi5t g3aCya ]%r cac`lpṠa pāyoigk g3aCya ]%r cac`ltll gūaCya mēymanat va! zal l \_ parpairk pḁdtlne kḁ tya A@yapnapeṠa wllmkapal n pItmanaVdare kḁ ḁ e A@yapn he p/wavl Aahe \_

**in\*k8R**

pāyoigk g3atll iv`a\$yace spadn mēyman he inyi5t g3atll iv`a\$yaCya spadn mēymanapeṠa j aSt Aahe \_ Mh`j c wllmkapal n pItmanapare kḁ ḁ e A@yapn p/wavl Aahe

**#; k in\*k8R**

1. 'xaly VyvS4apn ya iv8yatll ]p63kace wllmkapal n pItmanaCya sha'lyane A@yapn krta yte \_ Ü]idd\*3 c 1Y
2. A@yapnasa#l parpairk pḁdtlpṠa wllmkapal n pItmana he j aSt p/wavl Aahe \_ Ü]idd\*3 c 2Y

**sdwstl**

tavDe Sne \_ix.de p/\_(2005), 'ma@yimk v Jcma@yimk ix9': VyvS4apn smSya v Jpay' Üp/4mav<%dY, pu`e : Daym.D piBlkexn \_

pa3ll gl \_,(2005), 'wUimkapaln A@yapn p/itman',koLhapUr,fDke p/kaxn \_

parsnIs n \_ra \_,(2008), ix9ka.ce p/ix9`, pu`e : inTy nUtn p/kaxn \_

walerav su \_cVha` xE \_ ,ix.de p/\_(2009), 'xaley VyvS4apn : tTTve v p/aTyi9ke',naixk : g`expuja p/kaxn \_

mu;e,ra \_x \_]ma#e,iv \_tu \_,(1987) 'xE9i`k s.xo2n p`tI`Ü itsrI Aav<%dY AOr.gabad , mhara\*` iv`apI# g/4 inmlRtl m.D.; AOr.gabad

sohnI, ic \_ra \_ ÜÊÊÊÏÏ,'A@yapnaeI p/itmane' pu`e: nUtn p/kaxn \_

Bruce Joyce, Maershweil (1997) 'Models of teaching ' (fifth edition) , New Delhi: prentice Hall of India Private Limited.

Garret ,H. E. (2006) Statistics in Psychology and education cosmo publication for Genesis publication Pvt.Ltd. New Delhi